

NEW PRODUCT LINE-UP

PRO AV / SECURITY SOLUTIONS

GVision-USA designs and manufactures LCD / LED display products offering solutions to a wide array of customers



2024

- Touchscreen
- Video Wall Solution
- Antibacterial Monitor
- Medical Grade Monitor
- IP Public View Monitor
- AOE / PoE / IP Monitor
- Security CCTV Monitor





G-VISION



DELIVERING GLOBAL
VISIONARY SOLUTIONS

COMPANY PROFILE

G-Vision is a leader in LCD display technology, with a strategic blend of comprehensive product lines, exceptional component consistency, and high standards of quality manufacturing. This allows G-Vision to deliver significant price/performance advantages, while delivering the broadest product line in LCD displays.

G-Vision designs and manufactures LCD display products with touch screen, offering solutions to a wide array of customers. Whether it is a desktop, touch screen, or open frame unit, each LCD display offers eye pleasing clarity and stunning image quality. G-Vision's business partners include specialty distributors, value-added re-seller, vertical systems integrator and solution consultants, as well as large OEM (Original Equipment Manufacturer) in various markets. Together we can help your company create a powerful display solution that meets your exact needs, schedule, and budget.

COMPANY HISTORY

The G-Vision strength is its breadth of product lines, which offers the end-customer ultimate display flexibility. Our diverse product offerings of over 100 models ensures that you will have the right product to fit any multitude of design configurations and enclosures. G-Vision LCD displays include superior features, with the best mix of options available.

With over 1.5 million displays sold, G-Vision has successful installations of thousands of units in many vertical market segments, including point-of-sale (POS), point-of-information (POI), KIOSK, medical, hospitality, gaming, industrial, and financial applications. We also produce LCD displays suitable for traditional desktop use in consumer, SOHO and corporate environments.

INTRODUCTION OF **GVISION USA**



DELIVERING GLOBAL
VISIONARY SOLUTIONS

DESKTOP TOUCHSCREEN DISPLAY MONITOR

GVision manufactures a variety of desktop and point-of-sale (POS) monitors all available with touch screen. Sizes range from 10" up to 22" HD or 1080p wide full HD, and certain models are available with 5-wire resistive or projected capacitive (PCAP) touch screens.



PRODUCT FEATURES

- » Zero Bezel Touch Screen
- » Water and Dust Resistant
- » Zero Pressure Touch Activation
- » Available WIDE 10 Inch to 19 Inch Size
- » Input Source: HDMI / DVI / VGA
- » 16 : 9 Aspect Ratio for WIDE Display



10-Points
PCAP Touch



16 : 9
Aspect Ratio



HDMI Digital
Input



Dust/Water
Resistant

LED

Backlight
Unit



3-Year
Warranty

PRODUCT SPECIFICATIONS



MODEL	D10ZJ	D15ZX	D17ZH	D19ZH	D15ZD	D19ZC	D22ZD
DISPLAY							
Screen Size	10.1"	15"	17"	19"	15.6"	18.5"	21.5"
Resolution	1280 x 800	1024 x 768	1280 x 1024	1280 x 1024	1920 x 1080	1366 x 768 <small>(support up to 1080p)</small>	1920 x 1080
Backlight	LED	LED	LED	LED	LED	LED	LED
Display Area (HxV)	216.9 x 135.6	304.1 x 228.1	337.9 x 270.3	376.3 x 301.06	344.2 x 193.6	409.8 x 230.4	476.1 x 267.8
Aspect Ratio	16 : 10	4 : 3	5 : 4	5 : 4	16 : 9	16 : 9	16 : 9
Viewing Angle	170° / 170°	170° / 170°	170° / 160°	170° / 160°	170° / 170°	170° / 160°	178° / 178°
Response Time	25ms	35ms	5ms	5ms	30ms	5ms	14ms
Brightness	350cd/m ²	270cd/m ²	250cd/m ²	250cd/m ²	220cd/m ²	250cd/m ²	250cd/m ²
Contrast Ratio	800 : 1	1500 : 1	1000 : 1	1000 : 1	800 : 1	1000 : 1	3000 : 1
AUDIO							
Speakers	Option	Option	Option	Option	Option	Option	2W x 2
INTERFACE							
HDMI	1	1	1	1	1	1	1
DVI	0	1	1	1	1	Option	0
VGA (15 Pin D-sub)	1	1	1	1	1	1	1
USB	1 (USB Type-B)	1 (USB Type-B)	1 (USB Type-B)	1 (USB Type-B)	1 (USB Type-B)	1 (USB Type-B)	1 (USB Type-A)
TOUCH TECHNOLOGY							
Type	PCAP	PCAP	PCAP	PCAP	PCAP	PCAP	PCAP
Points	10-Points	10-Points	10-Points	10-Points	10-Points	10-Points	10-Points
Interface	USB (B-Type)	USB (B-Type)	USB (B-Type)	USB (B-Type)	USB (B-Type)	USB (B-Type)	USB (B-Type)
CABINET							
Material/Color	Metal/Silver	Metal/Silver & Black	Metal/Black	Metal/Silver	Metal/Black	Metal/Black	Plastic/Black
POWER							
Consumption	< 10W	< 16W	< 18W	< 20W	< 12W	< 14W	< 30W
Input Voltage	12V DC +/- 5% (AC 100V ~ 240V, 50/60Hz)						
TEMPERATURE							
Operating	32° F ~ 104° F	32° F ~ 104° F	32° F ~ 104° F	32° F ~ 104° F	32° F ~ 104° F	32° F ~ 104° F	32° F ~ 122° F
Storage	-4° F ~ 140° F	-4° F ~ 140° F	-4° F ~ 140° F	-4° F ~ 140° F	-4° F ~ 140° F	-4° F ~ 140° F	14° F ~ 140° F
DIMENSIONS (WxHxD)							
Inches (in)	9.8 x 6.6 x 1.1	14.3 x 13.7 x 8.7	15.1 x 14.8 x 8.7	16.7 x 14.7 x 8.6	15.2 x 13.5 x 8.6	17.9 x 14.2 x 8.7	20.38 x 12.74 x 1.50
Millimeter (mm)	249.7 x 167.6 x 27.9	362.4 x 348.4 x 220	384.2 x 378 x 220	425.9 x 399.2 x 220	388.2 x 344.6 x 220	453.8 x 361.4 x 220.3	517.8 x 323.7 x 38.3
WEIGHT							
Net Weight	5.8 lbs (3.2kg)	11 lbs (5.2 kg)	13.6 lbs (6.2kg)	15.8 lbs (7.2 kg)	12.1 lbs (5.5kg)	14.3 lbs (6.5 kg)	8.95 lbs (4.06kg)
REGULATION							
Certification	CE/FCC	CE/FCC	CE/FCC	CE/FCC	CE/FCC	CE/FCC	CE/FCC
VESA™							
Mount Holes (mm)	75 x 75	100 x 100	100 x 100	100 x 100	100 x 100	100 x 100	75 x 75

*Specifications subject to change

DELIVERING GLOBAL
VISIONARY SOLUTIONS

4K LARGE FORMAT TOUCHSCREEN MONITOR

GVision Large Format touchscreen monitor performs 4K UHD of 3840 x 2160 resolution and supports up to 40-points PCAP touchscreen. These are creating opportunities in digital signage, corporate webinars and infotainment. Our 55-inch monitor is built-In Android operating system.

4K
ULTRA HD



4K
ULTRA HD



PRODUCT FEATURES

- » 32", 43", 4K UHD 3840 x 2160 Resolution
- » 10-Point PCAP Multi-Touch
- » Zero Pressure Touch Activation
- » Available WIDE 10 Inch to 19 Inch Size
- » Input Source: HDMI / DVI / DP
- » Landscape or Portrait Orientation Supported

4K
ULTRA HD

3840 x 2160
4K UHD



HDMI Digital
Input



DP Digital
Input



10-Points
PCAP Touch



LED

Backlight
Unit



3-Year
Warranty

PRODUCT SPECIFICATIONS

MODEL	I32ZI 	I43ZI 
DISPLAY		
Screen Size	32"	43"
Resolution	3840 x 2160	3840 x 2160
Backlight	LED	LED
Display Area (HxV)	699 x 393	942.2 x 530.4
Aspect Ratio	16 : 9	16 : 9
Viewing Angle	178° / 178°	178° / 178°
Response Time	9.5ms	8ms
Brightness	350cd/m ²	350cd/m ²
Contrast Ratio	3000 : 1	1200 : 1
OPS SLOT		
OPS Module Slot	N/A	Yes
INTERFACE		
HDMI	1	1
DVI	1	0
Display Port (DP)	1	1
USB	1 (USB Type-B)	1 (USB Type-B)
TOUCH TECHNOLOGY		
Tempered Glass	3mm	4mm
Type/Points	PCAP/10-Points	PCAP/10-Points
Interface	USB (B-Type)	USB (B-Type)
AUDIO		
Speaker	Option	3W x 2
POWER		
Consumption	TBD	< 90W
Input Voltage	AC 100V ~ 240V, 50/60Hz	
TEMPERATURE		
Operating	32° F ~ 104° F (0° C ~ 40° C)	
Storage	14° F ~ 140° F (-10° C ~ 60° C)	
DIMENSIONS (WxHxD)		
Inches (in)	29.5 x 17.8 x 2.2	39.5 x 23.3 x 3.0
Millimeter (mm)	750.4 x 452.7 x 56.5	1003.2 x 591.4 x 75.7
WEIGHT		
Net Weight	30.8 lbs (14 kg)	61.7 lbs (28 kg)
CABINET		
Material/Color	Metal/Black	
VESA™		
Mount Holes (mm)	200 x 200	

*Specifications subject to change



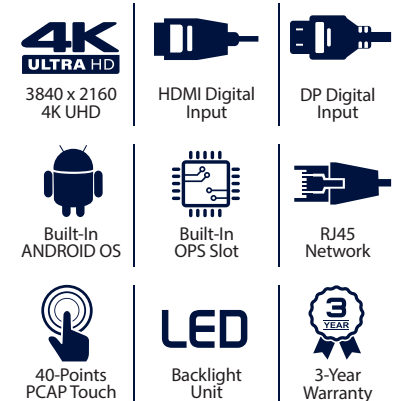
MODEL	I55ZI
DISPLAY	
Screen Size	55"
Resolution	3840 x 2160
Backlight	LED
Display Area (HxV)	1211.83 x 682.75
Aspect Ratio	16 : 9
Viewing Angle	178° / 178°
Response Time	8ms
Brightness	500cd/m ²
Contrast Ratio	1100 : 1
OPS SLOT	
OPS Module Slot	Yes
INTERFACE	
HDMI In / Out	2 / 1
VGA In	1
AV In / Out	1 / 1
DP (UHD) In	1
RS-232C In	1
Audio In / Out	1 / 1
RJ45 In / Out	1 / 1
USB In / Out	2 / 2
TOUCH TECHNOLOGY	
Tempered Glass	Anti Glare 3mm
Type	PCAP
Points	40-Points
Accuracy	2mm
Interface	USB (B-Type)
SYSTEM OS	
System Version	Android 5.0.1
CPU	ARM Cortex A53
GPU	Quad Core
RAM	1.5GB DDR3
Flash	8GB
POWER	
Consumption	< 200W
Input Voltage	AC 100V ~ 240V, 50/60Hz
CABINET	
Material	Metal
Color	Black

TEMPERATURE	
Operating	32° F ~ 122° F (0° C ~ 50° C)
Storage	-4° F ~ 140° F (-20° C ~ 60° C)
HUMIDITY	
Operating	20% ~ 80%
Storage	10% ~ 90%
DIMENSIONS (WxHxD)	
Inch (in)	50.4 x 30.7 x 3.8
Millimeter (mm)	1280 x 781 x 97
WEIGHT	
Net Weight	90.4 lbs (41 kg)
VESA™	
Mount Holes (mm)	400 x 400

*Specifications subject to change

PRODUCT FEATURES

- » 55-Inch, 4K UHD 3840 x 2160 Resolution
- » 40-Point PCAP Multi-Touch
- » Built-In OPS Computer Slot
- » Built-In ANDROID Operating System
- » Water and Dust Resistant
- » Zero Pressure Touch Activation
- » Input Source: HDMI / DVI / VGA
- » Landscape or Portrait Orientation Supported



DELIVERING GLOBAL
VISIONARY SOLUTIONS

OPEN FRAME TOUCHSCREEN MONITOR

GVision open frame touch monitors are an extensive product line of entry-level & industrial-grade LCD displays. Open frame touch monitors comprise Factory Automation, Kiosk, Process Control & Measurement, Gaming, Surveillance, and Public Display (Point of Information). Open frame touch screen monitors are tailored to fit the critical demands for embedded industrial products or serve as an access screen in public environments, where the interface must be flexible and sturdy enough to stand up to heavy usage and resist vandalism.



PRODUCT FEATURES

- » 15", 17", 19", 22", 24" Screen Size
- » FHD 1920 x 1080p Resolution (22", 24" Only)
- » 10-Point PCAP Multi-Touch
- » Zero Pressure Touch Activation
- » Input Source: HDMI / DVI / VGA
- » *Wide Screen: 15", 19" Available by Inquiry Only*

1080P
FULL HD

FHD 1080p
[22", 24" Size]



HDMI Digital
Input



DVI Digital
Input



10-Points
PCAP Touch

LED

Backlight
Unit



3-Year
Warranty

PRODUCT SPECIFICATIONS



MODEL	O15AX	O17AH	O19AH	O22AD	O24AD
DISPLAY					
Screen Size	15"	17"	19"	21.5"	23.8"
Resolution	1024 x 768	1280x 1024	1280x 1024	1920 x 1080	1920 x 1080
Backlight	LED	LED	LED	LED	LED
Display Area (HxV)	304.1 x 228.1	337.9 x 270.3	376.3 x 301.1	476.6 x 268.1	527.0 x 296.5
Aspect Ratio	4 : 3	5 : 4	5 : 4	16 : 9	16 : 9
Viewing Angle	170° / 170°	170° / 160°	170° / 160°	178° / 178°	178° / 178°
Response Time	12ms	5ms	5ms	18ms	12ms
Brightness	270cd/m ²	250cd/m ²	250cd/m ²	250cd/m ²	300cd/m ²
Contrast Ratio	1500 : 1	1000 : 1	1000 : 1	3000 : 1	3000 : 1
AUDIO					
Speaker	N/A	N/A	N/A	N/A	N/A
INTERFACE					
HDMI	1	1	1	1	1
DVI	1	1	1	1	1
VGA (15 Pin D-Sub)	1	1	1	1	1
USB	1 (USB Type-B)	1 (USB Type-B)	1 (USB Type-B)	1 (USB Type-B)	1 (USB Type-B)
TOUCH TECHNOLOGY					
Tempered Glass	2mm	2mm	2mm	3mm	3mm
Type/Points	PCAP/10-Points	PCAP/10-Points	PCAP/10-Points	PCAP/10-Points	PCAP/10-Points
Interface	USB (B-Type)	USB (B-Type)	USB (B-Type)	USB (B-Type)	USB (B-Type)
CABINET					
Material/Color	Metal/Black	Metal/Black	Metal/Black	Metal/Black	Metal/Black
POWER					
Consumption	< 15W	< 18W	< 20W	< 22W	< 37W
Electrical Ratings	DC12V / 5A (AC 100V ~ 240V, 50/60Hz)				
TEMPERATURE					
Operating	32° F ~ 104° F (0° C ~ 40° C)				
Storage	-4° F ~ 140° F (-20° C ~ 60° C)				
DIMENSIONS (WxHxD)					
Inches (in)	13.8 x 11.1 x 1.7	14.6 x 12.2 x 1.9	16.9 x 14.3 x 1.7	21.3 x 13.2 x 1.7	22.0 x 13.4 x 2.2
Millimeter (mm)	352.6 x 284.0 x 45.2	371.0 x 309.8 x 48.6	431.4 x 365.4 x 44.0	542.5 x 334.5 x 43.7	560.1 x 341.6 x 56.5
WEIGHT					
Net Weight	9.9 lbs (4.5kg)	9.9 lbs (4.5 kg)	12.1 lbs (5.5 kg)	13.2lbs (6.0kg)	13.8 lbs (6.3 kg)
COMPLIANT					
Certification	CE / FCC	CE / FCC	CE / FCC	CE / FCC	CE / FCC
VESA™					
Mount Holes (mm)	100 x 100	100 x 100	100 x 100	100 x 100	100 x 100

*Specifications subject to change

DELIVERING GLOBAL
VISIONARY SOLUTIONS

POINT-OF-SALE TOUCHSCREEN MONITOR

GVision's POS touch screen monitors are designed specifically for use in rugged and harsh point-of-sale (POS) environments where customers need the maximum amount of touch screen real estate for their applications.



PRODUCT FEATURES

- » 10", 17", and 19" Screen Size
- » 5-Wire Resistive Touch Technology
- » Input Source: DVI / VGA
- » USB-B, RS232 Touch Interface (17", 19" Only)
- » Ultra-Low Power Consumption
- » LED Backlight Unit



USB/RS232
Touch Port



DVI Digital
Input



VGA Analog
Input



Resistive
Touch

LED

Backlight
Unit



3-Year
Warranty

PRODUCT SPECIFICATIONS

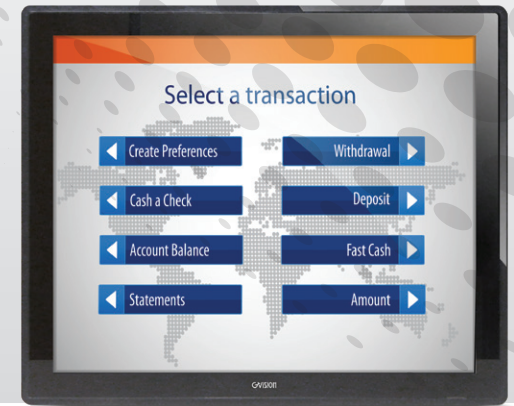
MODEL	P10PS	P17BH	P19BH
DISPLAY			
Screen Size	10.4"	17"	19"
Resolution	800 x 600	SXGA 1280 x 1024	SXGA 1280 x 1024
Backlight	LED	LED	LED
Display Area (HxV)	211.2 x 158.4	337.9 x 270.3	376.4 x 301.1
Aspect Ratio	4 : 3	5 : 4	5 : 4
Viewing Angle	160° / 150°	170° / 160°	170° / 160°
Response Time	15ms	5ms	5ms
Brightness	230cd/m ²	350cd/m ²	350cd/m ²
Contrast Ratio	500 : 1	1000 : 1	1000 : 1
AUDIO			
Speaker	1W / Per Channel Driver	1W x 2	1W x 2
INTERFACE			
DVI	0	1	1
VGA (15 Pin D-Sub)	1	1	1
USB	1 (USB Type-A)	1 (USB Type-A)	1 (USB Type-A)
RS232	Option	1	1
TOUCH TECHNOLOGY			
Technology	Resistive	Resistive	Resistive
Type	5-Wire	5-Wire	5-Wire
Support OS	Windows / Linux	Windows / Linux	Windows / Linux
CABINET			
Material/Color	Plastic / White & Black	Plastic / Black	Plastic / Black
POWER			
Consumption	< 36W	TBD	TBD
Electrical Ratings	DC12V / 3A (100-240V,50-60Hz)	AC 100V ~ 240V, 50/60Hz	AC 100V ~ 240V, 50/60Hz
TEMPERATURE			
Operating	32° F ~ 104° F (0° C ~ 40° C)	32° F ~ 104° F (0° C ~ 40° C)	32° F ~ 104° F (0° C ~ 40° C)
Storage	-4° F ~ 140° F (-20° C ~ 60° C)	-4° F ~ 140° F (-20° C ~ 60° C)	-4° F ~ 140° F (-20° C ~ 60° C)
DIMENSIONS (WxHxD)			
Inches (in)	10.9 x 9.5 x 1.6	15.4 x 15.0 x 7.0	17.2 x 16.4 x 7.0
Millimeter (mm)	278 x 242 x 43	392.3 x 381.5 x 180.2	438.0 x 417.5 x 180.2
WEIGHT			
Net Weight	3.6 lbs (1.64kg)	14.3 lbs (6.5 kg)	17.6 lbs (8 kg)
COMPLIANT			
Certification	CE / FCC / UL / cUL	FCC / UL / cUL	FCC / UL / cUL
VESA™			
Mount Holes (mm)	75 x 75	100 x 100	100 x 100

*Specifications subject to change

DELIVERING GLOBAL
VISIONARY SOLUTIONS

REAR MOUNT TOUCHSCREEN MONITOR

GVision's R-Series rear mount projected capacitive 10-points PCAP touch monitors are built for system builders who require a rugged and durable touch screen monitor solution that can easily be integrated into any embedded application.



PRODUCT FEATURES

- » SXGA 1280 x 1024 Screen Resolution
- » Zero Pressure Touch Activation
- » IP65 on the Front (Option)
- » 10-Points PCAP Touch Technology
- » Input Source: VGA / DVI / HDMI
- » Metal Enclosure Material



HDMI Digital
Input



DVI Digital
Input



VGA Digital
Input



10-Points
PCAP Touch

LED

Backlight
Unit



3-Year
Warranty

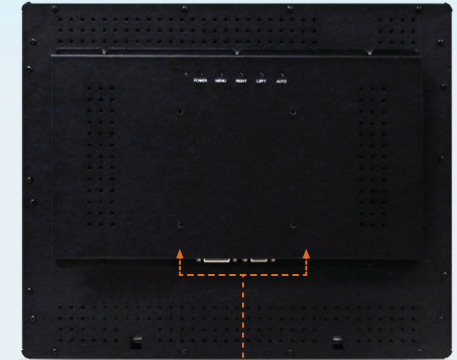
PRODUCT SPECIFICATIONS

MODEL	R17ZH	R19ZH
DISPLAY		
Screen Size	17"	19"
Resolution	1280 x 1024	1280 x 1024
Backlight	LED	LED
Display Area (HxV)	337.9 x 270.3	376.4 x 301.1
Aspect Ratio	5 : 4	5 : 4
Viewing Angle	170° / 160°	170° / 160°
Response Time	5ms	5ms
Brightness	250cd/m ²	250cd/m ²
Contrast Ratio	1000 : 1	1000 : 1
AUDIO		
Speaker	N/A	1W x 2
INTERFACE		
HDMI	Option	1
DVI	1	1
VGA (15 Pin D-Sub)	1	1
USB	1 (USB Type-B)	1 (USB Type-B)
TOUCH TECHNOLOGY		
Technology	Projected Capacitive (PCAP)	Projected Capacitance (PCAP)
Type	10-Points	10-Points
Support OS	Windows / Linux	Windows / Linux
CABINET		
Material/Color	Metal / Black	Metal / Black
POWER		
Consumption	< 18W	< 20W
Electrical Ratings	DC12V / 5A (AC 100V ~ 240V, 50/60Hz)	DC12V / 5A (AC 100V ~ 240V, 50/60Hz)
TEMPERATURE		
Operating	32° F ~ 104° F (0° C ~ 40° C)	32° F ~ 104° F (0° C ~ 40° C)
Storage	-4° F ~ 140° F (-20° C ~ 60° C)	-4° F ~ 140° F (-20° C ~ 60° C)
DIMENSIONS (WxHxD)		
Inches (in)	15.4 x 12.7 x 1.8	17.2 x 14.3 x 1.8
Millimeter (mm)	391.5 x 323.5 x 47.0	438.6 x 363.7 x 47.0
WEIGHT		
Net Weight	8 lbs (4 kg)	11.0 lbs (5.0 kg)
COMPLIANT		
Certification	CE / FCC	CE / FCC
VESA™		
Mount Holes (mm)	100 x 100	100 x 100

*Specifications subject to change

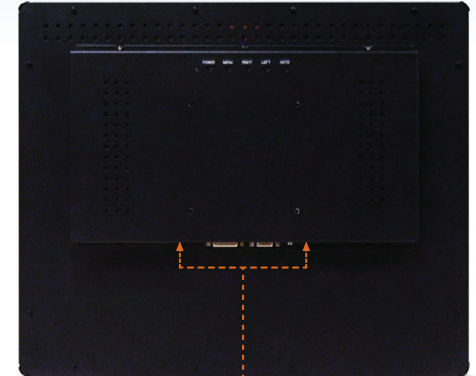
REAR MOUNT I/O PORT

R17ZH



HDMI (R17ZH-OV-45P0 **ONLY**) / DVI / VGA (15 Pin D-Sub) / USB Type-B for touch

R19ZH



HDMI / DVI / VGA (15 Pin D-Sub) / USB Type-B for touch

DELIVERING GLOBAL
VISIONARY SOLUTIONS

MEDICAL GRADE TOUCHSCREEN MONITOR

GVision MA series medical grades monitors have supported a 5-Wire resistive touch screen designed specifically for use in the medical industry. It's the perfect touch screen solution for health-care applications such as nursing stations. UL60601 certified.



PRODUCT FEATURES

- » 1280 x 1024 Screen Resolution
- » 5-Wire Resistive 1-Point Touch Technology
- » UL60601 Certified
- » Input Source: DVI / VGA
- » RS-232 or USB Type-A Touch Interface
- » LED Direct Backlight Unit



UL60601
Certified



DVI Digital
Input



USB-A Touch
Port



5-Wire
Resistive

LED

Backlight
Unit



3-Year
Warranty

PRODUCT SPECIFICATIONS

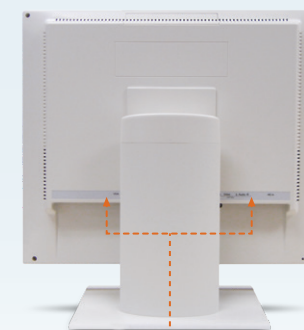
MODEL	MA17BH	MA19BH
DISPLAY		
Screen Size	17"	19"
Resolution	1280 x 1024	1280 x 1024
Backlight	LED	LED
Display Area (HxV)	337.9 x 270.3	376.4 x 301.1
Aspect Ratio	5 : 4	5 : 4
Viewing Angle	170° / 160°	170° / 160°
Response Time	5ms	5ms
Brightness	350cd/m ²	350cd/m ²
Contrast Ratio	1000 : 1	1000 : 1
AUDIO		
Speaker	2 (1W Per Channel)	2 (1W Per Channel)
INTERFACE		
DVI	1	1
VGA (15 Pin D-Sub)	1	1
USB Type-A / RS232	1 / 1	1 / 1
Audio	1	1
TOUCH TECHNOLOGY		
Technology	Resistive	Resistive
Type/Points	5-Wire / 1-Point Touch Resistive	5-Wire / 1-Point Touch Resistive
Support OS	Windows / Linux	Windows / Linux
CABINET		
Material/Color	Plastic / White	Plastic / White
POWER		
Input Voltage	DC12V / 5.25A	DC12V / 5A
Electrical Rating	AC 100V ~ 240V, 50/60Hz	AC 100V ~ 240V, 50/60Hz
TEMPERATURE		
Operating	32° F ~ 104° F (0° C ~ 40° C)	32° F ~ 104° F (0° C ~ 40° C)
Storage	-4° F ~ 140° F (-20° C ~ 60° C)	-4° F ~ 140° F (-20° C ~ 60° C)
DIMENSIONS (WxHxD)		
Inches (in)	15.4 x 15.1 x 7	17.2 x 16.4 x 7
Millimeter (mm)	392.0 x 381.5 x 180.0	438.0 x 417.5 x 180.0
WEIGHT		
Net Weight	14.3 lbs (6.5 kg)	17.6 lbs (8.0 kg)
COMPLIANT		
Certification	FCC / UL60601 / cUL	FCC / UL60601 / cUL
VESA™		
Mount Holes (mm)	100 x 100	100 x 100

*Specifications subject to change

REAR MOUNT I/O PORT



Front View



DVI / VGA (15 Pin D-Sub) / USB Type-B, and RS232 for touch

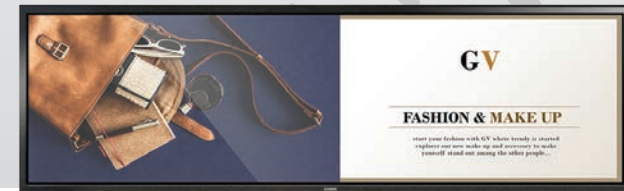


Side View

DELIVERING GLOBAL
VISIONARY SOLUTIONS

STRETCHED WIDE DISPLAY MONITOR

Our commercial-grade stretch display offers a distinctive signage solution, featuring a 32:9 aspect ratio ideal for showcasing advertisements in stores. The Smart Shelf integrates seamlessly, capable of displaying product details alongside promotional videos, providing brands with enhanced opportunities to engage with end-users.



PRODUCT FEATURES

- ▶ Portrait and Landscape Display Supported
- ▶ Ideal for Digital Signage and Advertisement
- ▶ 32 : 9 Aspect Ratio for Super Wide Monitor (S37AE)
- ▶ 13 : 2 Aspect Ratio for Smart Shelf Display (S16M)
- ▶ Built-In ANDROID OS / Cortex A-7 CPU / 8GB ROM / WiFi Network (S16M)

PRODUCT SPECIFICATIONS

MODEL	S37AE
DISPLAY	
Screen Size	37"
Resolution	1920 x 540
Backlight	LED
Display Area (HxV)	904.3 x 254.3
Aspect Ratio	32 : 9
Viewing Angle	170° / 160°
Response Time	8ms
Brightness	700cd/m ²
Contrast Ratio	4000 : 1
AUDIO	
Speaker	Option
INTERFACE	
HDMI	1
DVI	1
VGA (15 Pin D-Sub)	1
USB-A / RS232	1 / 1
CABINET	
Material/Color	Metal / Black
POWER	
Consumption	< 90W (Max)
Input Voltage	DC24V (Adapter)
TEMPERATURE	
Operating	32° F ~ 113° F (0° C ~ 45° C)
Storage	14° F ~ 140° F (-10° C ~ 60° C)
DIMENSIONS (WxHxD)	
Inches (in)	36.5 x 11.1 x 2.2
Millimeter (mm)	927.7 x 281.5 x 55.8
WEIGHT	
Net Weight	21.1 lbs (9.6 kg)
COMPLIANT	
Certification	FCC
VESA™	
Mount Holes (mm)	100 x 100 , 100 x 200
COMPLIANT	
TAA Compliant	S37AE-OV-400T Only

*Specifications subject to change

MODEL	S16N
DISPLAY	
Screen Size	16.3"
Resolution	1366 x 200
Backlight	LED
Aspect Ratio	13 : 2
Viewing Angle	170° / 160°
Brightness	300cd/m ²
Display Area	27.5 x 10.3 In
AUDIO	
Speakers	18.9KHz Audio Out by PIN Connector
INTERFACE	
Micro USB Input	1
USB	1
Audio	1
SYSTEM / HARDWARE	
System OS	Android 6.0 OS
CPU	Allwinner V40 Cortex-A7 Quad Core 1Ghz
GPU	ARM Mali400 Mp2 w/ OpenGL
RAM	1GB (256 MB x 4) DDR3
Flash Memory	8G EMMC Flash
Network	WiFi 2.4GHz, 5GHz (802.11b/g/n)
POWER	
Input Voltage	12V DC / 5A
TEMPERATURE	
Operating	32° F ~ 104° F (0° C ~ 40° C)
DIMENSIONS (WxHxD)	
Inches (in)	17.3 x 3.1 x 0.8
Millimeter (mm)	440.2 x 80.1 x 22.0
WEIGHT	
Net Weight	7.7 lbs (3.5 kg)
MOUNT	
Holes (mm)	215 x 40

*Specifications subject to change

16-INCH SMART SHELF



16.3" Android OS



WiFi Network



Advertisement Video



DVI Digital Input



POS Interlock



Landscape Portrait View



Built-In Android OS

37-INCH STRETCHED BAR



32:9 Aspect Ratio



HDMI Digital Input



DVI Digital Input



Landscape Portrait View



LED Backlight Unit



Stretched Wide Screen



3-Year Warranty



DELIVERING GLOBAL
VISIONARY SOLUTIONS

POE CCTV / ANDROID OS DISPLAY MONITOR

PoE is a technology that allows network cables to carry electrical power. Delivery is intelligent and designed to protect network equipment from overloading or underpowering. GVision's 1080p Full HD PoE monitors are designed to run 24/7/365. It supports HDMI and Displayport (DP) to display a high quality clear image

POE
POWER
& DATA

1080P
FULL HD



PRODUCT FEATURES

- » 1920 x 1080p Full HD Resolution
- » RJ45 PoE Input Power
- » Built-In Android OS (PE10ZJ)
- » 10-Point PCAP Touch Screen (PE10ZJ)
- » WiFi Network / 32GB Flash Memory (PE10ZJ)
- » Designed for 24 / 7 / 365 Operation

PRODUCT SPECIFICATIONS

MODEL PoE32BD	
DISPLAY	
Screen Size	32"
Resolution	1920 x 1080
Backlight	LED
Aspect Ratio	16 : 9
Viewing Angle	178° / 178°
Response Time	6.5ms
Brightness	300cd/m ²
Contrast Ratio	3000 : 1
AUDIO	
Speaker	3W x 2
INTERFACE	
HDMI	2
DisplayPort (DP)	1
Audio	1
RJ45 (PoE)	1
CABINET	
Material/Color	Plastic / Black
POWER	
Consumption	40W
Input Voltage	PoE 60W
INJECTOR TYPE	
Type	Type 3 PoE++ standard
Power Available at PD	51W
Power Delivered by PSE	60W
Voltage Range (at PSE)	50.0-57.0V
Voltage Range (at PD)	42.5-57.0V
Max. Current	600 mA per pair
Max. Cable Resistance Per Pairset	12.5 ohm
TEMPERATURE	
Operating / Storage	32° F ~ 122° F / -4° F ~ 140° F
DIMENSIONS (WxHxD)	
Inches (in)	28.9 x 19.1 x 8.2
WEIGHT	
Net Weight	24 lbs (10.88 kg)
VESA™	
Mount Holes (mm)	100 x 100

*Specifications subject to change

MODEL PE10ZJ	
DISPLAY	
Screen Size	10.1"
Resolution	1280 x 800
Backlight	LED
Aspect Ratio	16 : 10
Viewing Angle	170° / 170°
Response Time	25ms
Brightness	350cd/m ²
Contrast Ratio	800:1
AUDIO	
Speakers	N/A
INTERFACE	
Mini HDMI	1
RJ45 (PoE)	1
USB Type-C	1
USB	2
Audio In / Earphone Out	0 / 1
CABINET	
Material / Color	Metal / Black
SYSTEM	
Operating System	Android 10
RAM / ROM	4GB / 32GB Flash
Network	WiFi
TOUCH TECHNOLOGY	
Type / Point	PCAP / 10-Point
Surface Hardness	7H
POWER	
Consumption	< 15W
Input Voltage	PoE
TEMPERATURE	
Operating / Storage	32° F ~ 122° F / -4° F ~ 140° F
DIMENSIONS (WxHxD)	
Inches (in)	9.83 x 5.79 x 9.44
Millimeter (mm)	249.77 x 147.27 x 239.89
WEIGHT	
Net Weight	7.7 lbs (3.5 kg)
MOUNT	
Holes (mm)	75 x 75

*Specifications subject to change

POE CCTV MONITOR



◀ 32" Full HD 1080p

1080P
FULL HD

1920 x 1080p
Full HD



HDMI Digital
Input



DisplayPort
Input



RJ45 PoE
Port



24/7
Operation



3-
Year
Warranty

POE ANDROID OS MONITOR



◀ FHD 1080p
w/ Built-In
Android OS

1080P
FULL HD

1920 x 1080p
Full HD



HDMI Digital
Input



BNC
In/Output



RJ45 PoE
Port



Built-In
Android OS



3-
Year
Warranty

DELIVERING GLOBAL
VISIONARY SOLUTIONS

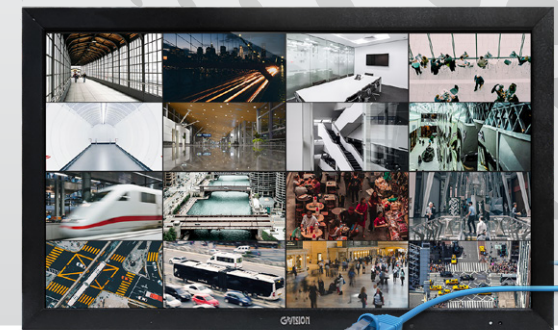
AOE / IP POE POWER&DATA DISPLAY MONITOR

The GVision IP Monitor series comprises POE Power and Data units equipped with embedded Android OS or Linux. This robust framework facilitates the real-time observation of live or archived video streams emanating from IP surveillance cameras linked within the network.

POE
POWER
& DATA



TAA
COMPLIANT



PRODUCT FEATURES

- ▶ 1920 x 1080p Full HD Resolution
- ▶ RJ45 PoE Input Power
- ▶ Built-In Android OS (IP24BD-OK-400TD)
- ▶ Max. 80m with CAT6 Cable
- ▶ 2GB RAM / 16GB Flash Memory (IP24BD-OK-400TD)
- ▶ Designed for 24 / 7 / 365 Operation

PRODUCT SPECIFICATIONS

MODEL	AOE43GD
DISPLAY	
Screen Size	43"
Resolution	1920 x 1080
Backlight	LED
Aspect Ratio	16 : 9
Viewing Angle	178° / 178°
Response Time	12ms
Brightness	500cd/m ²
Contrast Ratio	3000 : 1
AUDIO	
Speaker	Option
INTERFACE	
HDMI	1
RJ45 (PoE)	1
CABINET	
Material/Color	Aluminium housing / Black
POWER	
Consumption	Max.70W (80m CAT.6 cable)
Input	802.3bt type4 POE
INJECTOR	
RJ45	AOE 90W Output x1
HDMI	Input x1
USB Type-A	Input x1
TEMPERATURE	
Operating / Storage	32° F ~ 104° F / -4° F ~ 140° F
DIMENSIONS (WxHxD)	
Millimeter (mm)	961 x 549.2 x 47.7
Inches (in)	37.83 x 21.62 x 1.87
WEIGHT	
Net Weight	20.94 Lbs (9.5 Kg)
VESA™	
Mount Holes (mm)	400 x 400
PACKAGE OF CONTENTS	
Accessories	AOE Injector Device x1, HDMI Cable x1 USB Cable x1, Power Cord x1

**Specifications subject to change*

MODEL	IP24BD	IP27BD	IP24BD
DISPLAY			
Screen Size	24"	27"	27"
Resolution	1920 x 1080	1920 x 1080	1920 x 1080
Backlight	LED	LED	LED
Aspect Ratio	16 : 9	16 : 9	16 : 9
Viewing Angle	178° / 178°	178° / 178°	178° / 178°
Response Time	5ms	5ms	5ms
Brightness	250cd/m ²	300cd/m ²	300cd/m ²
Contrast Ratio	3000:1	3000:1	3000:1
AUDIO			
Speakers	2x built-in speaker (2W)	2x built-in speaker (2W)	2x built-in speaker (2W)
INTERFACE			
Interface	RJ45 x1, HDMI x1, DVI x1, VGA x1, USB x2, Audio In x2, Earphone Out x1		RJ45 x1, HDMI Out x1, USB x2, Audio In x1, SIM Card x1, Card Slot x1, Earphone x1
CABINET			
Material / Color	Metal / Black	Metal / Black	Metal / Black
SYSTEM			
CPU	N/A	N/A	RK3288, Quad core Cortex A17@2.2G
Operating System	N/A	N/A	Android 11
RAM / ROM	N/A	N/A	2GB / 8EMMC 16GB
Network	N/A	N/A	RJ45 Ethernet
VIDEO			
IP Video Support	16x (2592x1944) / 8x (2592x1944) / 4x (2592x1944)		
POWER			
Consumption	< 27W	< 35W	TBD
PoE Input	36~57VDC (Complies w/ IEEE802.3at IEEE802.3at/4-Pairs)		
Input (If no PoE)	100-240V 50/60Hz, Adapter DC 12V/5A		
TEMPERATURE			
Operating / Storage	32° F ~ 122° F (0° C ~ 50° C) / -4° F ~ 140° F (-20° C ~ 60° C)		
DIMENSIONS (WxHxD)			
Inches (in)	22.67 x 13.69 x 2.53	25.90 x 15.61 x 2.30	22.67 x 13.69 x 2.53
Millimeter (mm)	575.9 x 347.8 x 64.5	658.05 x 396.5 x 58.5	575.9 x 347.8 x 64.5
WEIGHT			
Net Weight	12.56 Lbs (5.7 Kg)	15.43 Lbs (7 Kg)	12.56 Lbs (5.7 Kg)
MOUNT			
Holes (mm)	100 x 100	100 x 100	100 x 100

**Specifications subject to change*



DELIVERING GLOBAL
VISIONARY SOLUTIONS

1080P FULL HD CCTV COMMERCIAL MONITOR

GVision's CCTV security monitors are designed for 24/7/365 operation Offering: HDMI, VGA, BNC, AHD/TVI/CVI looping inputs. Featuring Anti-Pixel burn technology and the V56 chipset for superior picture quality.

AHD **TVI** **CVI**



PRODUCT FEATURES

- » Full HD 1920 x 1080 Screen Resolution
- » HDMI / VGA / BNC CVBS Video Inputs
- » BNC AHD / TVI / CVI Looping (24", 27" Only)
- » Supports Up To 5MP AHD, 4MP TVI / 3MP CVI Input (24", 27" Only)
- » Designed for 24 / 7 / 365 Operation

1080P
FULL HD

1920 x 1080p
Full HD



24/7
Operation



HDMI Digital
Input

LED

Backlight
Unit



BNC
In/Output



3-Year
Warranty

PRODUCT SPECIFICATIONS

MODEL	C19BD	C22BD	C24BD	C27BD	C32BD	C43BD
DISPLAY						
Screen Size	18.5"	21.5"	24"	27"	32"	43"
Resolution	1920 x 1080	1920 x 1080	1920 x 1080	1920 x 1080	1920 x 1080	1920 x 1080
Backlight	LED	LED	LED	LED	LED	LED
Color	16.7 Million	16.7 Million	16.7 Million	16.7 Million	16.7 Million	16.7 Million
Aspect Ratio	16 : 9	16 : 9	16 : 9	16 : 9	16 : 9	16 : 9
Viewing Angle	150° / 120°	178° / 178°	178° / 178°	178° / 178°	178° / 178°	178° / 178°
Response Time	5ms	5ms	5ms	5ms	8ms	5ms
Brightness	250cd/m ²	250cd/m ²	250cd/m ²	250cd/m ²	300cd/m ²	260cd/m ²
Contrast Ratio	1000 : 1	1000 : 1	1000 : 1	1000 : 1	1000 : 1	1000 : 1
AUDIO						
Speaker	2W x 2 (option)	2W x 2 (option)	3W x 2	3W x 2	2W x 2	5W x 2
INTERFACE						
BNC In	0	0	2x HD (TVI/AHD/CVI)	4in1x1 (TVI/CVI/AHD 2.0)	0	0
BNC Out	0	0	2x HD (TVI/AHD/CVI)	4in1x1 (TVI/CVI/AHD 2.0)	0	0
CVBS BNC In / Out	1 / 1	1 / 1	0 / 0	1 / 1	1 / 1	1 / 1
HDMI In	1	1	1	1	1	1
VGA In	1	1	0	1	1	1
PC Audio In / Out	0 / 0	0 / 0	0	1 / 1	1 / 0	0 / 0
FEATURES						
Filter	2D / 3D combo	2D / 3D combo	2D / 3D combo	2D / 3D combo	2D / 3D combo	2D / 3D combo
Anti-Pixel Burn	Yes	Yes	Yes	Yes	Yes	Yes
Remote Control	Yes	Yes	Yes	Yes	Yes	Yes
CABINET						
Material/Color	Plastic / Black	Plastic / Black	Plastic / Black	Plastic / Black	Plastic / Black	Plastic / Black
POWER						
Consumption	< 20W	< 20W	< 25W	< 32W	< 45W	< 60W
Electrical Ratings	DC 12V / 3A	DC 12V / 3A	DC 12V / 5A	DC 12V / 3A	AC 100V ~ 240V, 50/60Hz	AC 100V ~ 240V, 50/60Hz
TEMPERATURE						
Operating	-4°F ~ 122°F (-50°C ~ 50°C)	-4°F ~ 122°F (-50°C ~ 50°C)	32° F ~ 104° F (0° C ~ 40° C)	-4°F ~ 122°F (-50°C ~ 50°C)	32°F ~ 104°F (0°C ~ 40°C)	32°F ~ 104°F (0°C ~ 40°C)
Storage	-22°F ~ 158°F (-30°C ~ 70°C)	-22°F ~ 158°F (-30°C ~ 70°C)	14° F ~ 140° F (-10° C ~ 60° C)	-22°F ~ 158°F (-30°C ~ 70°C)	-4°F ~ 140°F (-20°C ~ 60°C)	-4°F ~ 140°F (-20°C ~ 60°C)
DIMENSIONS (WxHxD)						
Inches (in)	17.37 x 13.08 x 5.87	TBD	21.31 x 15.39 x 5.78	24.57 x 18.20 x 7.60	28.69 x 21.69 x 9.59	38.10 x 22.14 x 3.17
Millimeter (mm)	441.4 x 332.3 x 149.1	TBD	541.37 x 391.07 x 147.00	624.1 x 462.5 x 193.1	728.9 x 551.1 x 243.8	967.9 x 562.6 x 80.7
WEIGHT						
Net Weight	5.73 lbs (2.6 Kg)	TBD	13.88 lbs (6.3kg)	9.9 lbs (4.5kg)	18.0 lbs (8.2 kg)	19.6 lbs (8.9 kg)
VESA™						
Mount Holes (mm)	100 x 100	100 x 100	100 x 100	100 x 100	100 x 100	200 x 200

*Specifications subject to change

DELIVERING GLOBAL
VISIONARY SOLUTIONS

4K UHD CCTV COMMERCIAL MONITOR

GVision's 4K UHD CCTV Security Monitors are available in the following sizes 32", 43", and 55" these units are designed for 24/7/365 operations. This line of 4K UHD monitors includes a built-in Quad Video Splitter & Anti-Burn technology for superior picture quality.



QUAD VIDEO SPLIT

4K
ULTRA HD



PRODUCT FEATURES

- ▶ 4K UHD 3840 x 2160 Screen Resolution
- ▶ HDMI / DisplayPort Video Inputs
- ▶ PIP/PBP, Auto Wake-Up, Anti-Burn Technology
- ▶ Built-In **Quad Video Splitter** to Split the Screen into 4
- ▶ Designed for 24 / 7 / 365 Operation



3840 x 2160
4K UHD



HDMI Digital
Input



DisplayPort
Input



24/7
Operation



Quay Video
Split



3-Year
Warranty

PRODUCT SPECIFICATIONS

MODEL	C32BI	C43BI	C55BI
DISPLAY			
Screen Size	32"	43"	55"
Resolution	3840 x 2160	3840 x 2160	3840 x 2160
Backlight	LED	LED	LED
Color	1.07 Billion	1.07 Billion	1.07 Billion
Aspect Ratio	16 : 9	16 : 9	16 : 9
Viewing Angle	178° / 178° IPS (ADS)	178° / 178° IPS	178° / 178° IPS
Response Time	4ms	5ms	5ms
Brightness	350cd/m ²	400cd/m ²	300cd/m ²
Contrast Ratio	1000 : 1	1000 : 1	1000 : 1
AUDIO			
Speaker	3W x 2	5W x 2	5W x 2
INTERFACE			
HDMI 1.4 In	2	2	2
HDMI 2.0 In	1	1	1
DisplayPort 1.2 (DP) In	1	1	1
Audio Out	1	1	1
FEATURES			
Quad Video Splitter	Yes (Split screen into 4)	Yes (Split screen into 4)	Yes (Split screen into 4)
Anti-Burn Technology	Yes	Yes	Yes
PIP / PBP	Yes	Yes	Yes
Flick Free, HDR	Yes	Yes	Yes
Remote Controller	Yes	Yes	Yes
CABINET			
Material/Color	Plastic / Black	Plastic / Black	Plastic / Black
POWER			
Consumption	< 55W	< 110W	< 155W
Electrical Ratings	24V DC / 3A (AC 100V ~ 240V, 50/60Hz)	AC 100V ~ 240V, 50/60Hz	AC 100V ~ 240V, 50/60Hz
TEMPERATURE			
Operating	-4° F ~ 122° F (-20° C ~ 50° C)	-4° F ~ 122° F (-20° C ~ 50° C)	-4° F ~ 122° F (-20° C ~ 50° C)
Storage	-22° F ~ 158° F (-30° C ~ 70° C)	-22° F ~ 158° F (-30° C ~ 70° C)	-22° F ~ 158° F (-30° C ~ 70° C)
DIMENSIONS (WxHxD)			
Inches (in)	28.19 x 20.21 x 8.03	38.22 x 24.5 x 8.36	49.12 x 31.09 x 10.22
Millimeter (mm)	716.16 x 513.44 x 204.12	970.8 x 622.3 x 212.3	1247.8 x 789.8 x 259.8
WEIGHT			
Net Weight	12.12 lbs (5.5 kg)	15.4 lbs (7.0 kg)	28.66 lbs (13 kg)
VESA™			
Mount Holes (mm)	100 x 100	200 x 200	200 x 400

*Specifications subject to change

DELIVERING GLOBAL
VISIONARY SOLUTIONS

IP PVM CCTV PUBLIC VIEW MONITOR

GVision's IP PVM (Public View Monitor) supports up to 1080p IP cameras with 1/2.8 STARVIS Sony. It is designed for 24/7/365 operation. IP PVM's can simultaneously loop the video feed out via IP and CVBS. Including built-in motion detection and warning alarm when the Image is lost by the internal sensor.

NDAA 
COMPLIANT



PRODUCT FEATURES

- » 10.1", 24", 27", and 32" Screen Sizes
- » 1080P IP Camera / Body Sensor for Auto Switch
- » On screen Warning Message on/off
- » I/O Ports: BNC Out / RJ45 (PVM10ZJ)
BNC In&Out / HDMI / VGA / USB / RJ45
- » Designed for 24 / 7 / 365 Operation

1080P
FULL HD

1920 x 1080p
Full HD



HDMI Digital
Input



CVBS BNC
In/Output



24/7
Operation

ONVIF

Onvif
Compliance



3-Year
Warranty

PRODUCT SPECIFICATIONS

MODEL	PVM10ZJ	PVM24ZD	PVM27ZD	PVM32ZD
DISPLAY				
Screen Size	10.1"	24"	27"	32"
Resolution	1280 x 800	1920 x 1080	1920 x 1080	1920 x 1080
Backlight	LED	LED	LED	LED
Color	16.7M	16.7M	16.7M	16.7M
Aspect Ratio	16 : 10	16 : 9	16 : 9	16 : 9
Viewing Angle	160° / 160°	178° / 178°	178° / 178°	178° / 178°
Response Time	15ms	5ms	5ms	5ms
Brightness	300cd/m ²	300cd/m ²	300cd/m ²	350cd/m ²
Contrast Ratio	1000 : 1	1000 : 1	1000 : 1	1000 : 1
INTERFACE				
Ports	CVBS Out x1/ SD Slot x1/ RJ45 Out x1	CVBS Cam Out x1 / HDMI In x1 / VGA In x1 / SD Slot x1 / RJ45 Out x1 / USB Type-A x1		
SD CARD READER				
Max. Resolution	576i@30fps	1920X1080@30fps	1920X1080@30fps	1920X1080@30fps
Max. Support Volume	32GB	64GB NTFS/FAT32	64GB NTFS / FAT32	64GB NTFS / FAT32
Max. Stream	15Mbit/s	15Mbit/s	15Mbit/s	15Mbit/s
Supporting Format	AVI, MOV, MP4,3 GP, MPG, VOB, DAT, WMV, ASF, JPEG, BMP, MP3, WMA			
IP CAMERA				
Sensor	1/3" Sony CMOS	1/2.8" STARVIS Sony Sensor	1/2.8" STARVIS Sony Sensor	1/2.8" STARVIS Sony Sensor
Resolution	080P@25fps	1920x1080@25fps	1920x1080@25fps	1920x1080@25fps
Minimum Illumination	0.1 Lux (Color), 0.01Lux (B/W)	0.1 Lux (Color), 0.01Lux (B/W)	0.1 Lux (Color), 0.01Lux (B/W)	0.1 Lux (Color), 0.01Lux (B/W)
Compliance	Onvif v2.2	Onvif Profile S/Q/G/T	Onvif Profile S/Q/G/T	Onvif Profile S/Q/G/T
Lens	3.6mm Fixed lens	3.3-12mm Vari-focal IR Corrected	3.3-12mm Vari-focal IR Corrected	3.3-12mm Vari-focal IR Corrected
CABINET				
Material/Color	Metal / Black	Metal / Black	Metal / Black	Metal / Black
POWER				
Consumption	< 18W	< 28W	< 30W	< 35W
	POE:IEEE 802.3at Less than 18W	PoE Standard IEEE802.3bt / 60W	PoE Standard IEEE802.3bt / 60W	PoE Standard IEEE802.3bt / 60W
Electrical Ratings	DC24V (AC 100V ~ 240V, 50/60Hz)	DC24V (AC 110V ~ 240V, 50/60Hz)	DC24V (AC 110V ~ 240V, 50/60Hz)	DC24V (AC 110V ~ 240V, 50/60Hz)
TEMPERATURE				
Operating	32° F ~ 122° F (0° C ~ 50° C)	32° F ~ 122° F (0° C ~ 50° C)	32° F ~ 122° F (0° C ~ 50° C)	32° F ~ 122° F (0° C ~ 50° C)
DIMENSIONS (WxHxD)				
Inches (in)	10.03 x 8.58 x 1.57	21.77 x 14.90 x 2.13	25.23 x 16.77 x 2.32	29.13 x 19.17 x 2.44
Millimeter (mm)	254.8 x 218.0 x 40.0	553.2 x 378.7 x 54.2	641 x 426 x 59	740 x 487 x 62
WEIGHT				
Net Weight	4.62 lbs (2.1 kg)	21.6 lbs (9.8 kg)	23.14 lbs (10.5 kg)	35.49 lbs (16.1 kg)
VESA™				
Mount Holes (mm)	75 x 75	100 x 100	100 x 100	100 x 100

*Specifications subject to change

DELIVERING GLOBAL
VISIONARY SOLUTIONS

SECURITY / DIGITAL SIGNAGE VIDEO WALL MONITORS

GVision's Ultra Narrow Bezel Video Wall monitors feature the thinnest bezels in the industry. Our bezel sizes range from 0.44mm to 1.2mm. When combined with our Custom Configured Video Wall Processor, we can provide a complete video wall solution that's ideal for 24/7/365 operation in places such as Command & Control Centers, Department of Transportation & Private Industry - to name a few.



PRODUCT FEATURES

- » 55" Screen Sizes
- » 0.44mm, 0.9mm, 1.2mm Bezel Width
- » Built-In Video Processor for Daisy Chain
- » Display 4K Content Over 2 x 2 Video Wall
- » HDMI, DisplayPort, and RS232C I/O Port
- » Configurable Up To 10 x 10 Screens



1920 x 1080p
Full HD



HDMI Digital
Input



DisplayPort
Input



Daisy Chain



Built-In Video
Processor



Super Slim
Bezel Width

PRODUCT SPECIFICATIONS

MODEL	VW55CD
DISPLAY	
Screen Size	55"
Resolution	1920 x 1080
Bezel Width	0.44mm (L/R/T/B), 0.9mm (L/R/T/B), 1.2mm (2.25mm L/T, 1.25mm R/B)
Backlight	LED
Color	1,06 Billion color
Aspect Ratio	16 : 9
Viewing Angle	178° / 178°
Brightness	500cd/m ²
Contrast Ratio	1400 : 1
LCD Technology	Commercial Grade IPS
INTERFACE	
HDMI In / Out	1 / 1
Display Port In	1
RS-232C In / Out	1 / 1
USB	1
FEATURES	
Max. Daisy Chain	10 x 10
Built-In Processor	Yes
Auto Pixel Shift	Yes
White Balance	Yes
Cooling	Passive
Temperature Sensor	Yes
Overheating Protection	Yes
CABINET	
Material/Color	Metal / Black
POWER	
Consumption	< 280W
Electrical Ratings	AC 100V ~ 240V, 50/60Hz
TEMPERATURE	
Operating	32°F ~ 122°F (0°C ~ 50°C)
Storage	-4°F ~ 140°F (-20°C ~ 60°C)
DIMENSIONS (WxHxD)	
Inches / Millimeter	47.8 x 26.9 x 4.0 / 1214.12 x 683.26 x 101.6
WEIGHT	
Net Weight	77.2 lbs (35kg)
VESA™	
Mount Holes (mm)	600 x 400

*Specifications subject to change

VIDEO WALL FEATURES

THIN BEZEL WIDTH

1.2mm super slim and 0.44mm ultra slim bezel makes for seamless viewing even at close ranges.



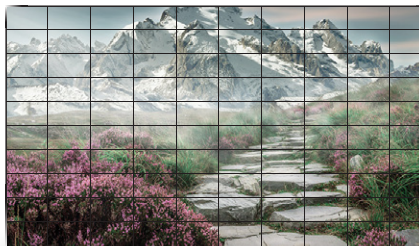
OVERHEATING PROTECTION

The high temperature such as internal environment, long time use, and multiple connections of various units, Overheating Protection prevents increase of temperature for safety. Warning message and automatic power off at certain temperature.



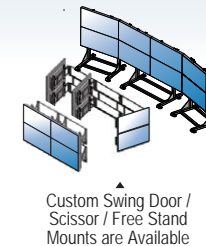
CONFIGURATION RANGE

GVision's LCDs are designed to create "matrix" or "banner" style video walls for applications requiring the very best visual performance and long lasting maintenance free operation. They can be arranged in configurations ranging from 2 x 1 to 10 x 10 configurations, providing eye-catching video walls as large as 39 feet high by 22 feet wide.



Shown configuration of 10x10 video wall

MOUNT OPTION



OPERATION / WARRANTY

With an all metal chassis, fan-less design, and commercial grade LCD panel, GVision's video wall monitors are designed to last for years, under rigorous conditions.



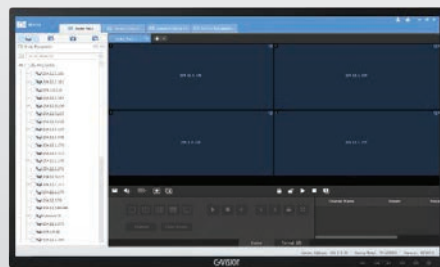
DELIVERING GLOBAL
VISIONARY SOLUTIONS

MAX. 80 INPUT/OUTPUT VIDEO WALL CONTROLLER

GVision's VW-CG series is a video wall controller designed for security video wall and multi-screen display installations that require a balanced number of HD video captures and HD video outputs. The VW-CG series has unique capture cards and decoder cards of up to 8 HDMI ports and maximum 10 configurable slots to provide flexible solutions for the professional av industry as well as security industry. Each signal has a dedicated transmission channel, which ensures the real-time display of images of all signals. Users can insert the service board into any service board slot, enabling flexible application of boards. It Supports custom EDID, allowing users to customize the resolution of input video sources. This controller comes with EZWall, a license free software for controlling the configuration of your inputs.

MAX 10
CONFIGURABLE OF IN/OUT SLOTS

EZWall Client
Software



PRODUCT FEATURES

- ▶ Up To 8 HDMI Per Slot & Max. 10 Configurable Slots
- ▶ Embedded Linux OS Ensures 24/7 Stable Operation
- ▶ Advanced PCIe Switching Chip in the Industry
- ▶ Resolution Real-time Total Adaptation Technology
- ▶ Supports Picture In Picture Mode
- ▶ Supports Custom EDID, users to Customize the Resolution



1920 x 1080p
Full HD



Max. 10
Configurable Slots



Embedded
Linux OS



24/7
Operation



Redundant
Power (Option)



4K UHD
(Option)

PRODUCT SPECIFICATIONS

*Specifications subject to change

MODEL Video Wall Controller	
CHASSIS	
Dimensions (Inch/mm)	17.59" × 18.54" × 5.19" / 447mm × 471mm × 132mm
Weight (Lbs/Kg)	31.08 lbs (14.1 Kg)
Power Consumption	< 350W
Service Board Slots	10
Mixed Insertion	Support
Control Board Interface	1x network, 1x Console serial, 3x RS232/RS485 serial, 2x USB, 1x RST key, 1x SWAP Hot-swappable key
Operation Voltage	100V~ 240V AC 50Hz/60Hz
Temperature	0°C ~ +50°C (Operation) / -40°C ~ +70°C (Storage)
Humidity	0% ~ 90% (Operation) / 0% ~ 95% (Storage)
BOARD TYPE	
Signal Input	HDMI x4 / HDMI x8
Signal Output	HDMI x4 / HDMI x8
Input Resolution	XGA:1024x768@60, 720P:1280x720@50, 1280x720@60 SXGA:1280x1024@60, WXGA:1440x900@60, UXGA:1600x1200@60 1080P:1920x1080@50, 1920x1080@60, WUXGA:1920x1200@60
SCREEN CONTROL	
Number of Windows	Each output can open 8 windows on average / All output can be shared Up to 32 windows are allowed for each output
Roam and Overlay	The windows can roam at any position on the video wall Supports window overlay / picture-in-picture mode
One-Click Layout	Create a video wall with an M x N lor fixed layout
Multiple Video Walls	Create & manage 4 video walls w/ different configurations
Scene Management	Up to 64 scenes can be saved
ADVANCED	
Signal Delay	< 100ms
Output Sync	Fully synchronized
Power Failure Protection	Current running services and layout restored after restart.
Seamless Switching	Support

MODEL Capture Card	
Number of Port	4-Port / 8-Port HDMI
Customized Resolution	Maximum width 2048/ Maximum height 4032
Consumption	< 6W (4-Port) / < 15W (8-Port)

MODEL Graphic Card	
Number of Port	4-Port / 8-Port HDMI
Customized Resolution	Maximum width 2048 / Maximum height 2048
Consumption	< 8W (4-Port) / < 15W (8-Port)

MODEL EZWall Client Software		
CHASSIS		
Device management	Add, edit, delete devices on LAN / automatic search	
	Open device's Web interface from the client	
	View device status, including status of NVR-connected IPCs	
	Supports Onvif	
Video Wall	Add, edit, delete video walls / supports small pixel pitch LED	
	Bind decoding CH automatically, bind decoding CH by one-click, splice screens, custom screen layout	
	Scene, scene plan (execute by set time interval or 24-hr schedule)	
	One click (1/3/4/5/6/7/8/9/10/13/16/17/25/32/36/64 and MxN custom layout), right mouse button, or coordinates Window roaming and overlay, double-click window to view in full screen mode, renumber windows, window lock/unlock, display on top/bottom, view window/split window info	
	Start videos in batches on one or multiple screens	
	Sequence display videos in one or multiple windows	
	Play PC's video signals through server's DVI or VGA to the video wall	
	Device group, including default group and custom group	
	Virtual LED: LED coordinates, custom LED content, font style, font size, font color, character spacing and alignment, background color and transparency, moving speed and mode: enable/disable virtual LEDs	
	Supports audio output and volume adjustment	
	Sequence Resource	Add, edit, and delete sequence resource
	Screen Control	Turn on/off screen automatically at a set time
Turn on/off screen manually		
Turn on/off screen with delay		
Client Configuration	Automatic login to EZWall and Windows	
	Automatically display selected window on top	
	Play video with set or adaptive stream type	
REQUIREMENTS		
OS	32-bit or 64-bit Microsoft Windows 7, 8, 10	
CPU	Intel Core i5 2.3GHz or higher	
RAM	4GB or higher	

EZWALL SOFTWARE FEATURES

- » Supports other manufacturers' IPC and NVR
- » Live view, sequence display, play signal source, open windows by one click, split window, window roaming, virtual LED, scenes and scene plans
- » Supports small pixel pitch LED, turn on/off Uniview screens automatically at a set time, turn on/off manually or with a delay
- » **The customer license will be included**

DELIVERING GLOBAL
VISIONARY SOLUTIONS

FULL HD ANTIBACTERIAL TOUCHSCREEN MONITORS

GVision's most advanced antibacterial monitor can be used in hospitals, restaurants or anywhere else where human hygiene is a concern. The AB Series destroys bacteria and harmful microorganisms on contact. It is chemically bonded to the surface, making it a permanent part of the touch-screen and allowing it to remain functional even after long-term use. SGS Standards Technical Services tested and pass the value of antimicrobial activity against common bacteria.



PRODUCT FEATURES

- » 27", 32" Screen Sizes
- » 1920 x 1080 Full HD Resolution
- » Long Acting Antibacterial Screen
- » SGS Report Pass the Value of Antimicrobial Activity Against Common Bacterial
- » IP65 Waterproof / Dust, and Vandal Proof

1080P
FULL HD

1920 x 1080p
Full HD



HDMI Digital
Input



DVI Digital
Input

SGS

SGS Report
PASS



Destory Harmful
Microorganism



10-Points
PCAP Touch

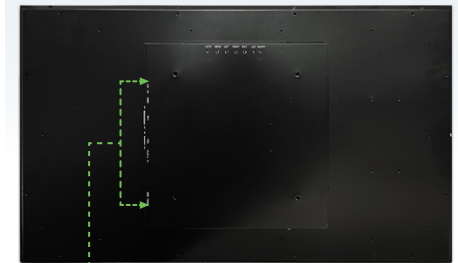
PRODUCT SPECIFICATIONS

MODEL	AB27ZD	AB32ZD
DISPLAY		
Screen Size	27"	32"
Resolution	1920 x 1080	1920 x 1080
Backlight	LED	LED
Color	16.7 Million	16.7 Million
Aspect Ratio	16 : 9	16 : 9
Viewing Angle	178° / 178°	178° / 178°
Brightness	250cd/m ²	300cd/m ²
Contrast Ratio	1000 : 1	1200 : 1
Response Time	12ms	8ms
INTERFACE		
HDMI In	1	1
DVI In	1	1
VGA In	1	1
Audio	1	1
USB Type-B	1	1
FEATURES		
Glass	Prevent Bacteria	Prevent Bacteria
Water Proof	Yes	Yes
Dust Proof	Yes	Yes
Vandal Proof	Yes	Yes
TOUCH TECHNOLOGY		
Type / Point	Projected Capacitive (PCAP) / 10-Point	Projected Capacitive (PCAP) / 10-Point
Interface	USB (B-Type)	USB (B-Type)
CABINET		
Material/Color	Metal / Black	Metal / Black
POWER		
Consumption	30W	< 55W
Electrical Ratings	AC 100V ~ 240V, 50/60Hz	AC 100V ~ 240V, 50/60Hz
TEMPERATURE		
Operating	32°F ~ 122°F (0°C ~ 50°C)	32°F ~ 122°F (0°C ~ 50°C)
Storage	-4°F ~ 140°F (-20°C ~ 60°C)	-4°F ~ 140°F (-20°C ~ 60°C)
DIMENSIONS (WxHxD)		
Inches (in)	25.60 x 15.29 x 1.81	29.4 x 17.3 x 2.2
Millimeter (mm)	650.4 x 388.4 x 46.0	747.4 x 441.3 x 58.6
WEIGHT		
Net Weight	23.14 lbs (10.5 kg)	26.4 lbs (12 kg)
VESA™		
Mount Holes (mm)	75 x 75 / 100 x 100	200 x 200

AB-SERIES PRODUCT VIEW



27-Inch AB27ZD I/O Ports
HDMI / DVI / VGA / Audio / USB-B



32-Inch AB32ZD I/O Ports
HDMI / DVI / VGA / Audio / USB-B

*Specifications subject to change

55" DIGITAL SIGNAGE WHITEBOARD SOLUTIONS

GVision's Multi-touch Whiteboard solution with built-in Android OS creates an intuitive interface without the need for a PC. This monitor supports wireless communication with cross-platform devices in a classroom, making it an important addition to classrooms moving forward.

MODEL	TC55ZI
DISPLAY	
Screen Size	55"
Resolution	3840 x 2160
Backlight	Direct LED
Aspect Ratio	16 : 9
Viewing Angle	178° / 178°
Brightness	450cd/m ²
Contrast Ratio	5000 : 1
INTERFACE	
Video (Digital) In	HDMI 2.0 x 3 / DP 1.2 x 1 / USB-C 3.1 Gen2 x 1
Video (Analog) In	VGA x 1 / AV x 1 / YPbPr x 1
RJ45 In/Out	1 / 1
Media (Android) Input	USB 2.0 A-type x 1 / SD card Slot x 1
Media Input	USB 3.0 A-type x 3 / USB-C 3.1 Gen2 x 1
RS232C In / Out	1 / 1
OPS Slot Input	Support Max. 4K / 60fps
Audio Input	Audio in (3.5mm) x 1 / Mic (3.5mm) x 1
Video (Digital) Output	HDMI 2.0 x 1
Audio Output	SPDIF Optical x 1 / Audio Out (3.5mm) x 1
Touch Output	USB2.0 B-type x 3 / USB-C 3.1 Gen2 x 1
TOUCH TECHNOLOGY	
Type / Point	High Precision & Lower Z-axis IR touch / 32-Point
Tempered Glass	Anti-glare 4mm
OS Compatibility	Win 10/8/7: 32pt / Win XP: 1pt / Mac: 1pt / Android: 16pt / Linux: 1pt / Chrome:1pt
SYSTEM	
OS	Dual System: Windows® 10 & Android 8.0
CPU	Windows®: Intel i5 / Android: Dual Core A73+ Dual Core A53
RAM/ROM	Windows®: DDR4 4GB/128GB SSD / Android: 4GB/32GB
AUDIO	
Speakers	16W x 2
TEMPERATURE	
Operating	32°F ~ 104°F (0°C ~ 40°C)
VESA™	
Mount Holes (mm)	400 x 400

*Specifications subject to change

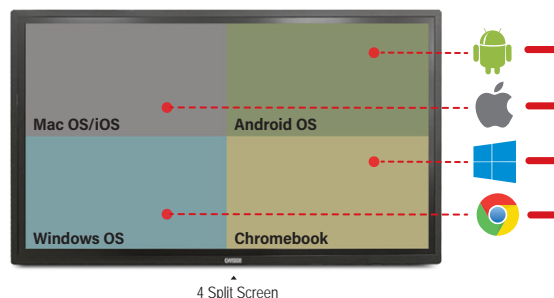
PRODUCT FEATURES

- » 55", 4K UHD 3840 x 2160 Resolution / 32pt IR Touch
- » **Dual System:** WINDOWS® 10 & ANDROID 8.0
- » **Split Screen:** Two to Three Split Screens
- » **Built-In** Digital Signage Cloud Software
- » **Interactive Annotation Tools:** Whiteboard
- » Windows®: DDR4 4GB/128GB SSD / Android: 4GB/32GB
- » 3-Year Warranty

4K
ULTRA HD



AeroPitch (Wireless Presentation System)



INTERACTIVE ANNOTATION TOOL

Supports wireless communication with cross-platform devices in a classroom.



- » **Annotation Tools** for drawing and text tools used to draw attention to content. This can be used on any content item where they appear, such as a whiteboard.



0.9 / 1.2 / 1.5 / 1.9 / 2.5MM PIXEL PITCH LED TILE

Gvision's line of LED tile displays have applications in studios, control rooms, conference rooms, and other venues. Pixel pitch for these displays range from 0.9mm to 2.5mm.

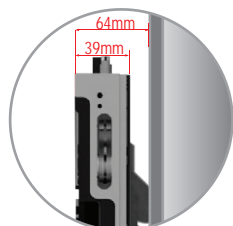
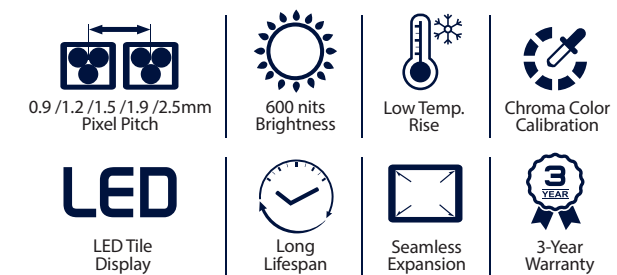
MODEL	L09A	L12A	L15A	L19A	L25A
DISPLAY					
Pixel Configuration	Mini LED	SMD LED	SMD LED	SMD LED	SMD LED
Pixel Pitch	0.9mm	1.2mm	1.5mm	1.9mm	2.5mm
Panel Resolution	640 x 360	480 x 270	384 x 216	320 x 180	240 x 135
Refresh Rate (Hz)	1920 / 2880 / 3840	1920 / 2880 / 3840	1920 / 2880 / 3840	1920 / 2880 / 3840	1920 / 2880 / 3840
Gray Level (bit)	12 / 14 / 16	12 / 14 / 16	12 / 14 / 16	12 / 14 / 16	12 / 14 / 16
Color Temperature (K)	2000 < TC < 10000 adjustable				
Brightness	600 cd/m ²	600 cd/m ²	600 cd/m ²	600 cd/m ²	600 cd/m ²
Contrast Ratio	8000 : 1	8000 : 1	8000 : 1	8000 : 1	8000 : 1
Viewing Angle (H/V)	140° / 140°	140° / 140°	140° / 140°	140° / 140°	140° / 140°
Brightness Adjustment	Programmable / Auto / Manual				
Color Calibration	Brightness, Chroma Calibration				
FEATURES					
Serviceability	Front	Front	Front	Front	Front
MATERIAL					
Cabinet	Die-Casting Aluminum				
POWER					
Working Voltage	AC 100V ~ 240V, 50/60Hz				
Power Consumption	700W (Max.)	700W (Max.)	700W (Max.)	700W (Max.)	700W (Max.)
TEMPERATURE					
Operating	32°F ~ 104°F (-20°C ~ 40°C)				
Storage	-4°F ~ 122°F (-20°C ~ 50°C)				
DIMENSIONS (WxHxD)					
Inches (in)	24.2 x 13.5 x 1.5	24.2 x 13.5 x 1.5	24.2 x 13.5 x 1.5	24.2 x 13.5 x 1.5	24.2 x 13.5 x 1.5
Millimeter (mm)	610.3 x 343.1 x 39.2	610.3 x 343.1 x 39.2	610.3 x 343.1 x 39.2	610.3 x 343.1 x 39.2	610.3 x 343.1 x 39.2
WEIGHT					
Per Unit	14.7 lbs (6.7 Kg)	14.7 lbs (6.7 Kg)	14.7 lbs (6.7 Kg)	14.7 lbs (6.7 Kg)	14.7 lbs (6.7 Kg)

*Specifications subject to change



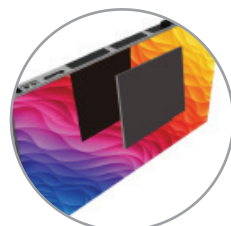
PRODUCT FEATURES

- » 0.9mm / 1.2mm / 1.5mm / 1.9mm / 2.5mm Pixel Pitch
- » 600 nits High Brightness
- » Brightness and Chroma Color Calibration
- » Die-Casting Aluminum Cabinet Material
- » User-Friendly Front Maintenance
- » Operate **100,000 Hours** of Long Lifespan



SLIM PANEL

Thickness is only 39mm 50% slimmer than traditional panel. Wall mounted thickness is only 64mm save conventional space. Light weight design.



FRONT MAINTENANCE

Components like modules, power supply, system card can be maintained from the front without rear space. Module removal takes only 1 s before dealing with potential failures.



HDR TECHNOLOGY

Through HDR, LED display can present pictures in a more delicate way to bring up more details. Our LED adopts the industry's top-level control system and fully supports the latest HDR function, to achieve unrivaled display effect to perfect restore the real color.



We GVision like to hear from you, please contact our trained sales representative for detail product information via toll-free phone today.

1-888-651-9688

ADDRESS

30398 Esperanza
Rancho Santa Margarita, CA 92688

PHONE/FAX

P. 888-651-9688 / 949-586-3338
F. 949-272-4594

EMAIL

sales@gvision-usa.com
info@gvision-usa.com

URL

www.gvision-usa.com

